

Ratings:

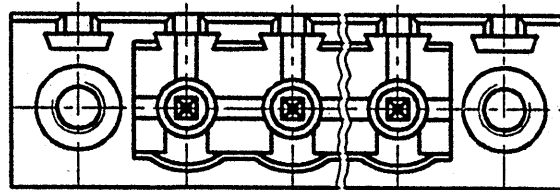
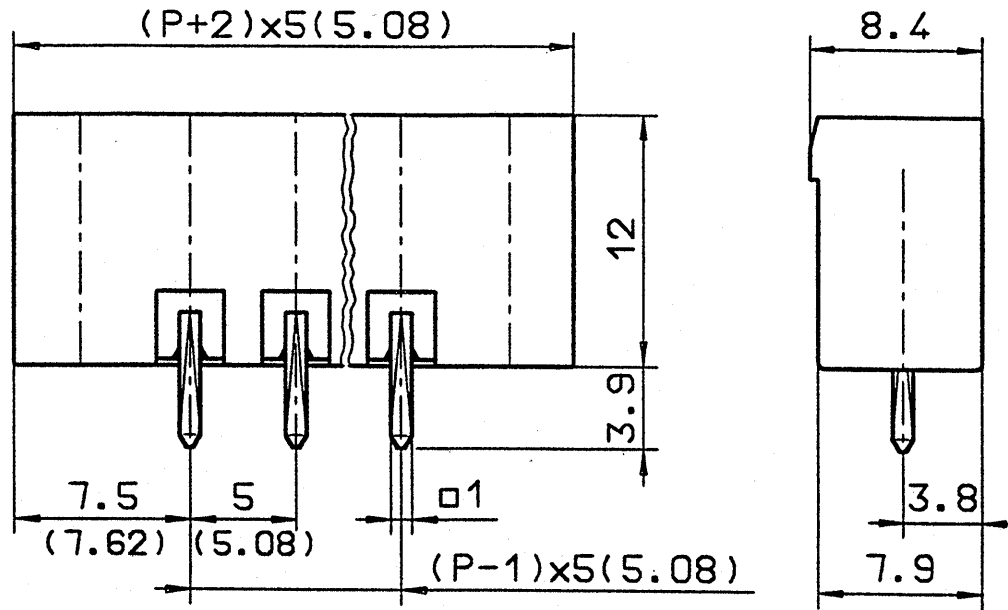
Current 15A
Voltage 300 VB
Test Voltage 2.0 kV

Dimensions:

Spacing 5.0mm (5.08mm)
PCB Hole Diameter 1.4mm

Materials:

Insulating Material PA
Flammability UL94V-0
Temperature -30°C/+105°C
Contact Pin Cu
Color Green



Part Number

EDSTL(Z)956/ * *

* - NUMBER OF POSITIONS

Units

mm

Drawing

Reviewed

Approved

Date

1/23/98

Sheet 1 of 1

Rev. A