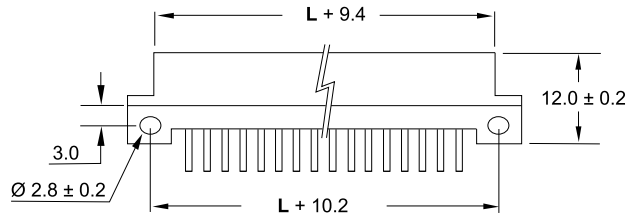
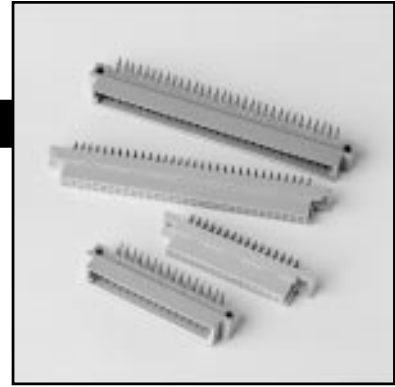


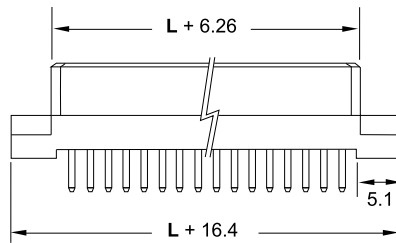
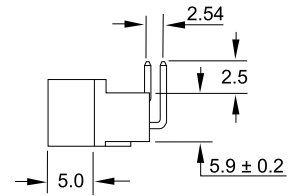
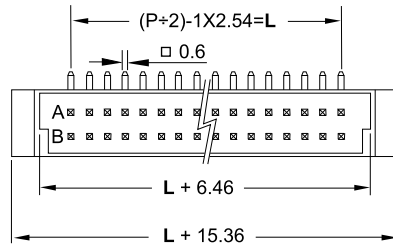
Series: DINB

Din 41612 - Type B

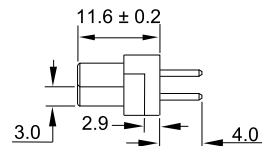
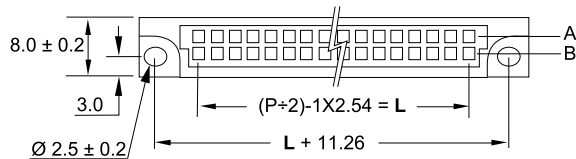
- ❖ H = 16, 32 Positions
- ❖ F = 32, 64 Positions



DINB-H ___ P ___
 DINB-F ___ P ___



DINB-H ___ S ___
 DINB-F ___ S ___



Specifications

EuroDin Series:

DIN

Ratings:

Current	2A
Dielectric strength	1000V RMS for 1 minute.
Contact resistance	30mΩ max.
Insulation resistance	1000MΩ min.
Operating temperature	-55°C / +105°C

Material:

Plastic	PBT Glass filled, UL94V-0
Contact	Male - Brass Female - Phosphor Bronze

ORDERING PROCEDURE

1 - 2 3 4 5

1) Series

2) Size:

H = Half
F = Full

3) Number of Positions

4) Gender:

P = Male
S = Female

5) Plating:

6 = Selective flash gold (standard)
8 = Selective 30μ gold*
*May require minimums