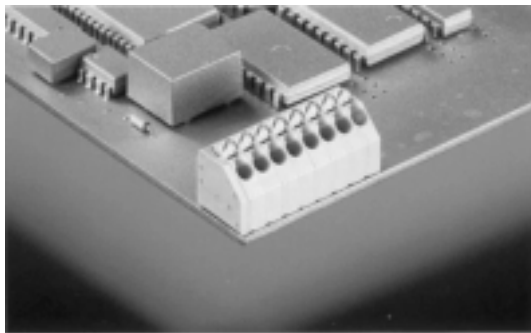


ED4291/X-KD



1-n poles, Spacing 3.5 mm
insert required no. of poles **X**
How to order see page 5



Ratings:

Rated Voltage	300 V	130 V
Rated Current	6 A	3 A (T60)
Wire Size	AWG 22-16	0.75 mm ²
Test Voltage		1.25 kV

Max. Rated Cross Section

Single Wire (solid)	1.5 mm ²
---------------------	---------------------

Dimensions

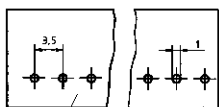
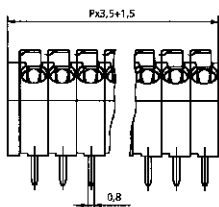
Spacing	3.5 mm
PCB Hole Diameter	1.0 mm (2x)
Stripped Length	9.0 mm

Materials

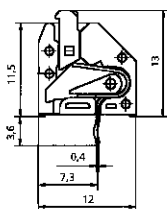
Insulating Material	PA
Flammability Class	UL94 V-0
Temperature Range	-30°C/+105°C
Contact	Cu

Color

Slade Grey



PCB-component side



P = No. of poles