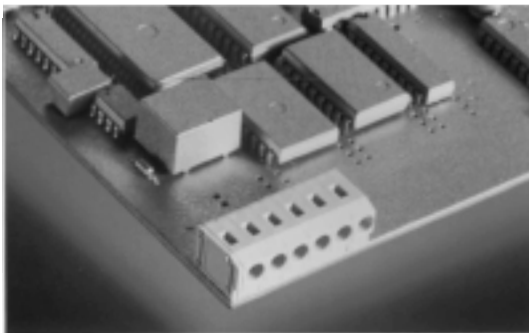


ED4100/X



1-n poles, Spacing 5.0 mm
 insert required no. of poles **X**
 How to order see page 5



Ratings:

Rated Voltage	300 V	250 V
Rated Current	10 A	17.5 A (T60)
Wire Size	AWG 20-14	1.5 mm²
Test Voltage		2 kV

Max. Rated Cross Section

Single Wire (solid)	2.5 mm²
Stranded Wire (flexible)	on request
Stranded wire with Ferrules	on request

Dimensions

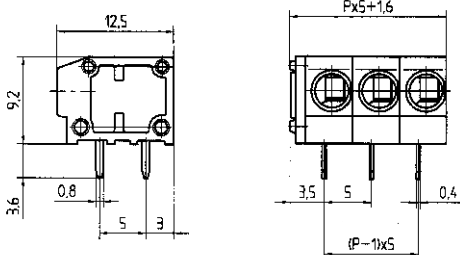
Spacing	5.0 mm
PCB Hole Diameter	1.0 mm (2x)
Stripped Length	9.0 mm

Materials

Insulating Material	PA
Flammability Class	UL94 V-0
Temperature Range	-30°C/+105°C
Tension Spring	Stainless Steel
Wire Guard	Cu

Color

Slade Grey



P = No. of poles