

SIGN	DATE	DESCRIPTION	APPROVER
			Tony
THIS IS CAD DRAWING, DO NOT REVISE MANUALLY!!!			

### SPECIFICATIONS

**RATINGS**  
 Current Rating: 0.3A  
 Voltage Rating: 50V AC(r.m.s.)  
 Temperature Range: -25°C ~ +85°C  
 Contact Resistance: <50mΩ  
 Insulation Resistance: >50MΩ  
 Dielectric Withstanding Volt: 250V AC for 1 min

**MATERIAL:**  
 Body: High Temp plastic, Color Nature  
 Slider: Glass Filled Polyamide, Color Black  
 Contact: Copper Alloy  
 Plating: Gold flash over 30u" Ni  
 available with Sn/Ni plating  
 Fixed Tab: Copper Alloy  
 Flammability: UL94 V-0

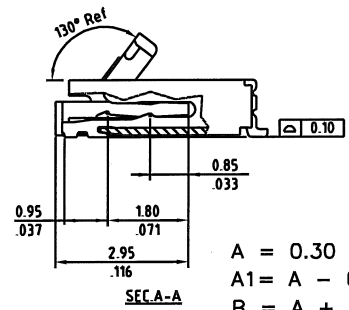
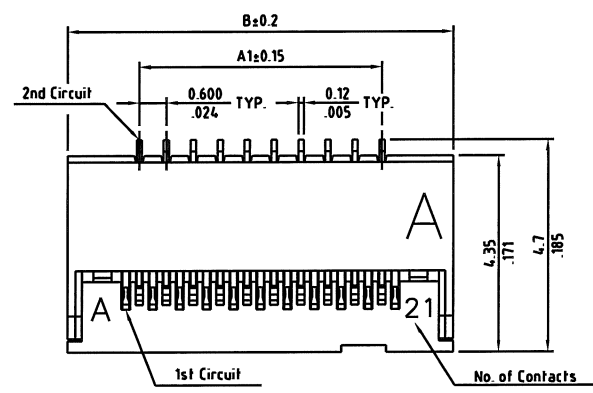
RoHS Compliant

Part Number

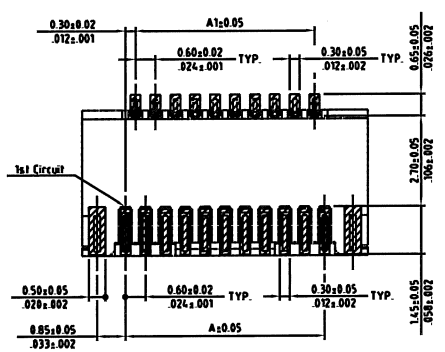
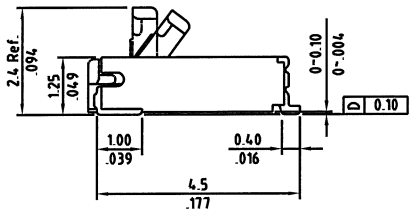
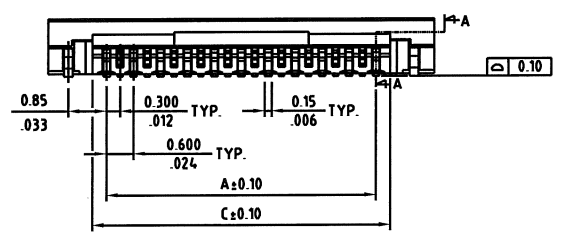
FPC030XXSD1XX

# of circuits  
11 - 61

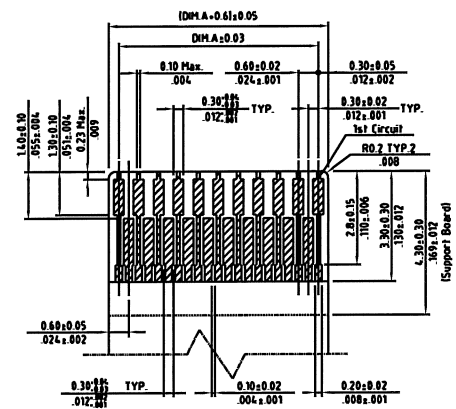
Packaging  
TU - tube  
TR - tape/reel



A = 0.30 \* (No. of Contacts - 1)  
 A1 = A - 0.6  
 B = A + 2.6  
 C = A + 0.63  
 \* AVAILABLE IN 11 THROUGH 61 CIRCUITS



Recommended P.C. Board Layout



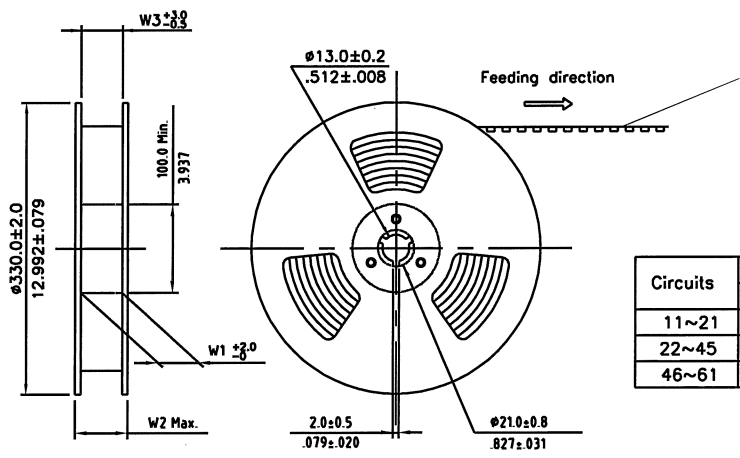
Recommended FPC Dimension  
Thickness: 0.2±0.03mm

THESE DRAWINGS AND SPECIFICATIONS ARE THE PROPERTY OF ON-SHORE TECHNOLOGY, INC. AND SHALL NOT BE REPRODUCED, COPIED OR USED IN ANY MANNER WITHOUT THE PRIOR WRITTEN CONSENT OF ON-SHORE TECHNOLOGY, INC.

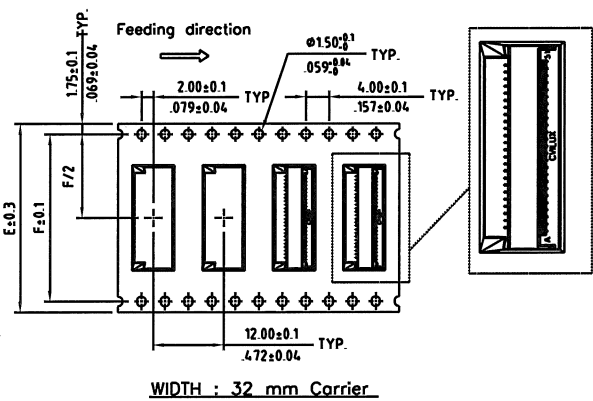
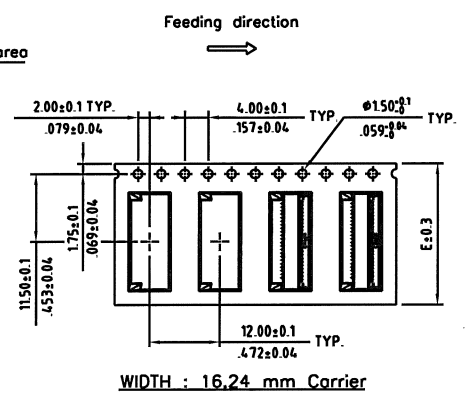
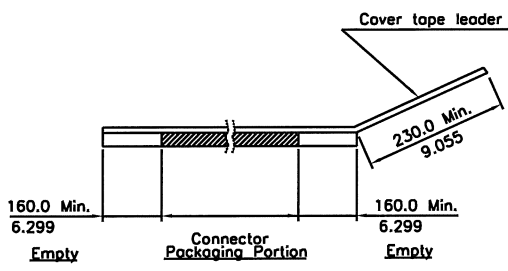
		TITLE		FPC030 Series - 0.3mm, One-Touch ZIF FPC SMT, Downside contact connector	
		PART NO.		FPC030XXSD1XX	
APPROVED		CHECKED	DESIGNED	DRAWN	DWG NO. FPC030XXSD1XX.DWG
Alex 2007.06.10		David 2007.06.10	Eisley 2007.06.10	Sandy 2007.06.10	4050
				Tolerance	
				UNIT: mm/inch .X ±0.15/0.006	
				SCALE: NONE .XX ±0.10/0.004	
				REV: A .XXX ±0.05/0.002	
				SHEET: 01/02	

SIGN	DATE	DESCRIPTION	APPROVER
			Tony
THIS IS CAD DRAWING, DO NOT REVISE MANUALLY!!!			

- NOTE :
- 10 sprocket hole pitch cumulative tolerance  $\pm 0.20$ .
  - Carrier camber is within 1 mm in 250mm.
  - Material : Clear,Transparent Polystyrene Alloy (UP-5200).
  - All dimensions meet EIA-481-C requirements.
  - Thickness :  $0.40 \pm 0.05$ mm.
  - Packing length per 22" reel : 92.5 Meters.
  - Component load per 13" reel : 2000 pcs.



Circuits	Dimension					Packing (Reel/Caton)
	E	F	W1	W2	W3	
11~21	16.0(.630)	—	16.5(.650)	22.5(.886)	16.5(.650)	11
22~45	24.0(.945)	—	24.5(.965)	30.5(1.201)	24.5(.965)	9
46~61	32.0(1.260)	28.40(1.118)	32.5(1.280)	38.5(1.516)	32.5(1.280)	7



# OST ON-SHORE TECHNOLOGY, INC.

THESE DRAWINGS AND SPECIFICATIONS ARE THE PROPERTY OF ON-SHORE TECHNOLOGY, INC. AND SHALL NOT BE REPRODUCED, COPIED OR USED IN ANY MANNER WITHOUT THE PRIOR WRITTEN CONSENT OF ON-SHORE TECHNOLOGY, INC.

TITLE		FPC030 Series - 0.3mm SMT Tape-Reel		
PART NO.		DWG NO.		
APPROVED	CHECKED	DESIGNED	DRAWN	4050
Alex 2007.06.16	David 2007.06.16	Eisley 2007.06.16	Sandy 2007.06.16	Tolerance
				UNIT: mm/inch
				SCALE: NONE
SHEET: 02/02				REV: A
		.X ±0.15/006		
		.XX ±0.10/004		
		.XXX ±0.05/002		