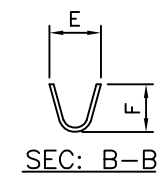
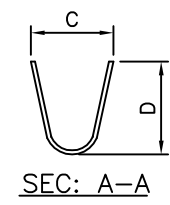
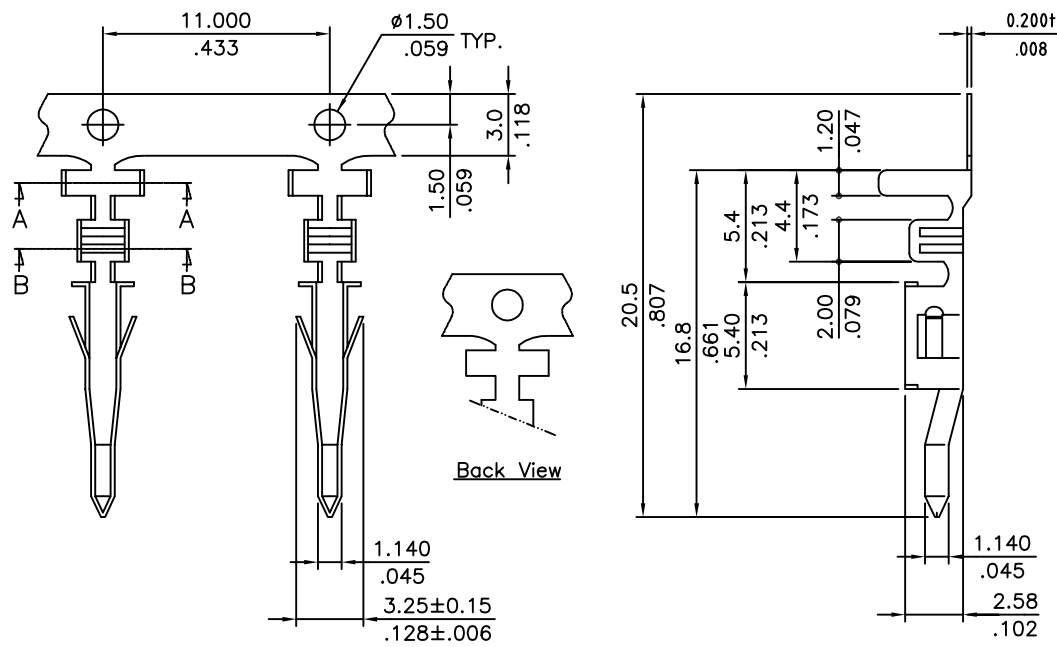


SIGN	DATE	DESCRIPTION	APPROVER
		THIS IS CAD DRAWING, DO NOT REVISE MANUALLY!!!	

RoHS Compliant



CODE	Wire Gauge	Dimension				Insulation Range	Material	Reel Q'ty
		C	D	E	F			
1	AWG #22~26	3.4(.134)	3.3(.130)	2.5(.098)	2.3(.091)	0.9-1.8(.035-.071)	Brass	5,000 PCS
2	AWG #18~22	4.0(.158)	4.5(.177)	2.5(.098)	2.3(.091)	1.3-3.1(.051-.122)	Brass	4,000 PCS
3	AWG #22~26	3.4(.134)	3.3(.130)	2.5(.098)	2.3(.091)	0.9-1.8(.035-.071)	Phosphor Bronze	5,000 PCS
4	AWG #18~22	4.0(.158)	4.5(.177)	2.5(.098)	2.3(.091)	1.3-3.1(.051-.122)	Phosphor Bronze	4,000 PCS
5	AWG #16	4.0(.158)	4.5(.177)	2.8(.110)	2.6(.102)	1.8-3.1(.071-.122)	Brass	4,000 PCS
6	AWG #16	4.0(.158)	4.5(.177)	2.8(.110)	2.6(.102)	1.8-3.1(.071-.122)	Phosphor Bronze	4,000 PCS



THESE DRAWINGS AND SPECIFICATIONS ARE THE PROPERTY OF ON-SHORE TECHNOLOGY, INC. AND SHALL NOT BE REPRODUCED, COPIED OR USED IN ANY MANNER WITHOUT THE PRIOR WRITTEN CONSENT OF ON-SHORE TECHNOLOGY, INC.

TITLE		420CH-T Series - 4.20mm latch'n lock crimp terminal, Housing #16-28 AWG					
PART NO.	420CH-T-X	X - CODE		DWG NO.	420CH-T-X.DWG		
APPROVED	CHECKED	DESIGNED	DRAWN	4050		Tolerance	
Shi Jun 2006.04.24	Marvin 2006.04.23	Marvin 2006.04.23	Marvin 2006.04.22			UNIT: mm/inches	X.X ±0.20/.008
				SHEET: 01/01		SCALE: NONE	X.XXX ±0.10/.004
				REV: A		X* ±0.05/.002	X* ±1°