

SIGN	DATE	DESCRIPTION	APPROVER
		<i>THIS IS CAD DRAWING, DO NOT REVISE MANUALLY!!!</i>	

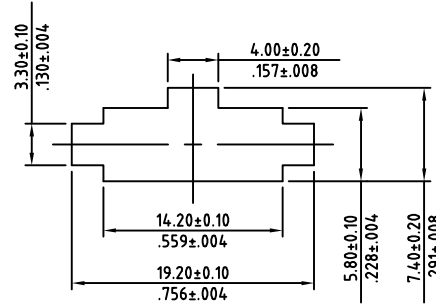
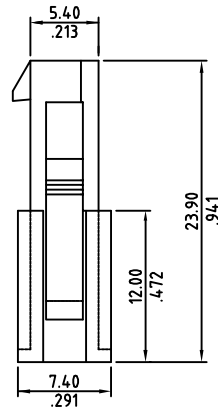
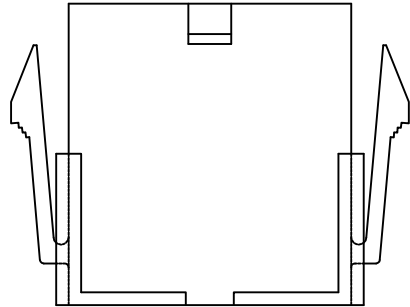
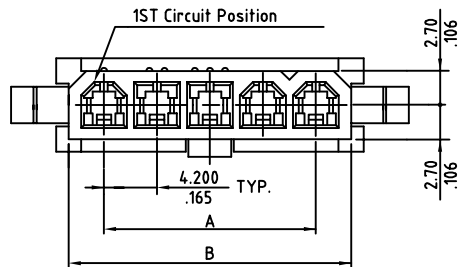
Material

- Body: Nylon 66
- Color: Natural

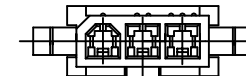
Electrical

- Current: 9A max
- Voltage: 600V AC(r.m.s.)
- Dielectric Withstanding: 1500 VAC for one minute
- Insulation Resistance: >1000 MΩ
- Contact Resistance: <10 mΩ
- Operating Temperature: -25°C ~ 85°C

RoHS Compliant



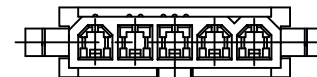
Panel Mounting Hole Details



3 CIRCUITS

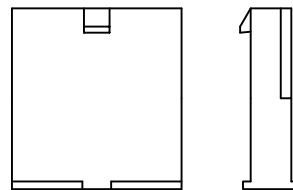
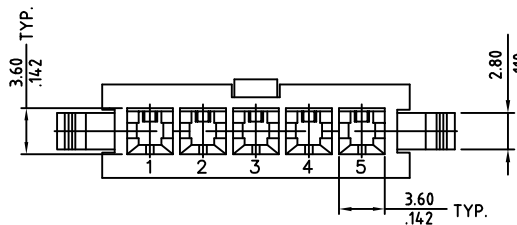


4 CIRCUITS



5 CIRCUITS

CIRCUIT PATTERN SCHEDULE



WITHOUT EARS

Circuits	Dimension	
	A	B
03	8.40(.331)	13.9(.547)
04	12.60(.496)	18.1(.713)
05	16.80(.661)	22.3(.878)



THESE DRAWINGS AND SPECIFICATIONS ARE THE PROPERTY OF ON-SHORE TECHNOLOGY, INC. AND SHALL NOT BE REPRODUCED, COPIED OR USED IN ANY MANNER WITHOUT THE PRIOR WRITTEN CONSENT OF ON-SHORE TECHNOLOGY, INC.

TITLE		420C1 Series - 4.2mm latch'n lock single row housing, cable side			
PART NO.	420C1H0XX0	XX - circuits	DWG NO.	420C1H0XX0.DWG	
APPROVED	CHECKED	DESIGNED	DRAWN	4050	
Shi Jun 2006.06.07	Marvin 2006.06.07	Marvin 2006.06.07	Marvin 2006.06.07	Tolerance	
				UNIT: mm	
				SCALE: NONE	
				X.X ±0.38/.015	
				X.XX ±0.25/.010	
				X.XXX ±0.10/.004	
				X* ±1°	
SHEET: 01/01				REV.: A	