

SIGN	DATE	DESCRIPTION	APPROVER
		<i>THIS IS CAD DRAWING, DO NOT REVISE MANUALLY!!!</i>	

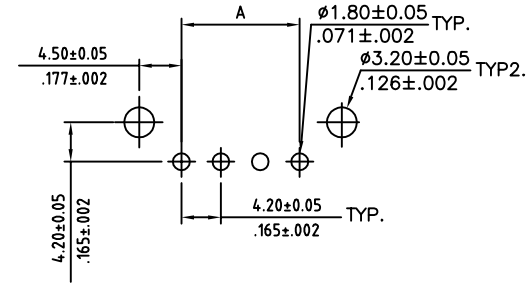
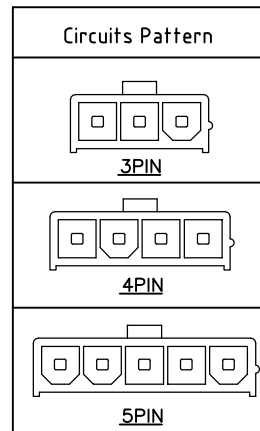
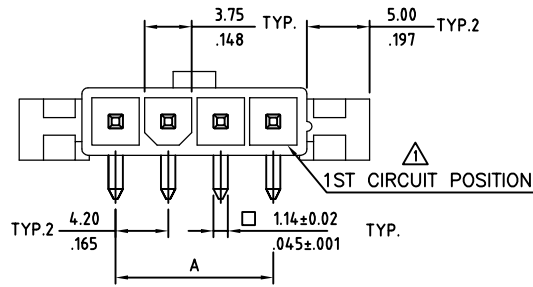
Material

- Body: Nylon 6T
- Color: Natural
- Contacts: Brass
Plating: Tin over Nickel
other options available, MOQ may be required
- Flammability: UL94V-0

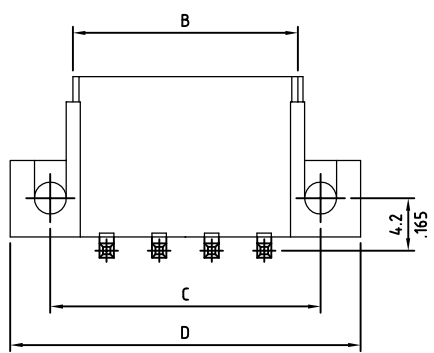
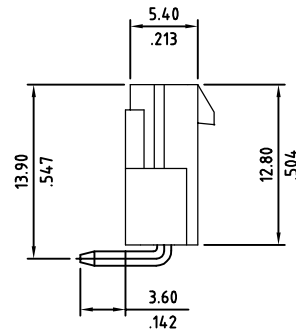
Electrical

- Current: 9A max
- Voltage: 600V AC(r.m.s.)
- Dielectric Withstanding: 1500 VAC for one minute
- Insulation Resistance: >1000 MΩ
- Contact Resistance: <10 mΩ
- Operating Temperature: -25°C ~ 85°C

RoHS Compliant



Recommended P.C. Board Layout



Circuits	Dimension			
	A	B	C	D
03	8.4(.331)	13.8(.543)	17.4(.685)	23.8(.937)
04	12.6(.496)	18.0(.709)	21.6(.850)	28.0(1.102)
05	16.8(.661)	22.2(.874)	25.8(1.016)	32.2(1.268)

THESE DRAWINGS AND SPECIFICATIONS ARE THE PROPERTY OF ON-SHORE TECHNOLOGY, INC. AND SHALL NOT BE REPRODUCED, COPIED OR USED IN ANY MANNER WITHOUT THE PRIOR WRITTEN CONSENT OF ON-SHORE TECHNOLOGY, INC.



TITLE		420B1RXX10 series, 4.20mm latch'n lock right-angle, dip solder header, 1-row, with mounting ears			
PART NO.	420B1RXX10	XX - circuits	DWG NO.	420B1RXX10.DWG	
APPROVED	CHECKED	DESIGNED	DRAWN	4050	
		Tony 2006.06.07	Tony 2006.06.07	Tolerance	
				UNIT: mm	X. ±0.38/015
				SCALE: NONE	X.X ±0.25/.010
				REV: A	X.XX ±0.10/.004
				SHEET: 01/01	X° ±1°