

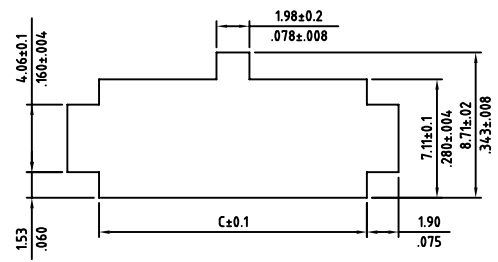
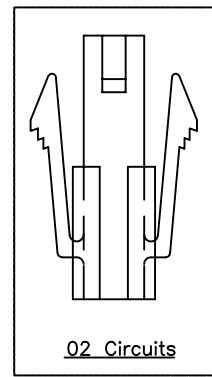
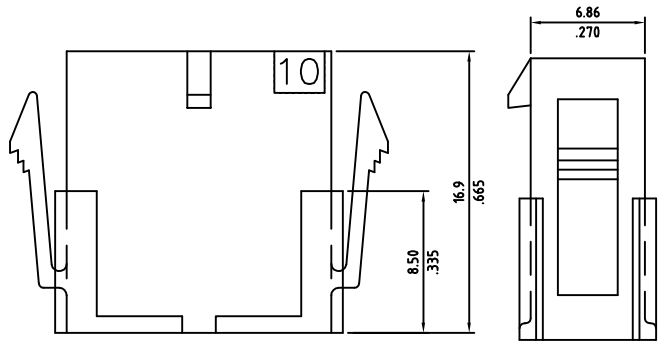
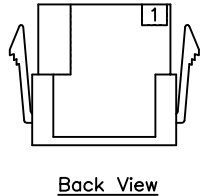
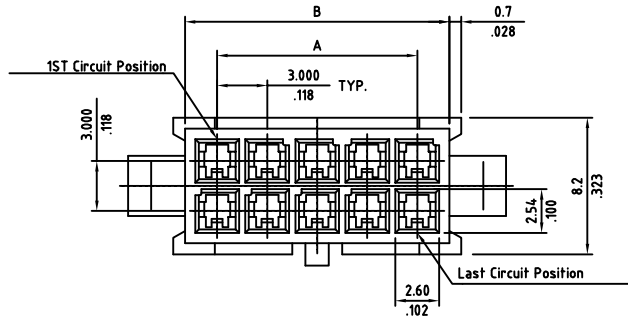
SIGN	DATE	DESCRIPTION	APPROVER
		<i>THIS IS CAD DRAWING, DO NOT REVISE MANUALLY!!!</i>	

**SPECIFICATIONS**

Body: PBT  
 Color: Black  
 Flammability: UL94V-0  
 Current: 5A for AWG#20-22  
           4A for AWG#24  
           2A for AWG#26  
           1A for AWG#28-30  
 Voltage: 250V AC(r.m.s.)  
 Dielectric Withstanding: 1500 VAC for one minute  
 Insulation Resistance: >1000 MΩ  
 Contact Resistance: <10 mΩ  
 Operating Temperature: -40°C ± 105°C

RoHS Compliant

Circuits	Dimension		
	A	B	C
02	—	3.9(.154)	4.09(.161)
04	3.00(.118)	6.9(.272)	7.09(.279)
06	6.00(.236)	9.9(.390)	10.08(.397)
08	9.00(.354)	12.9(.508)	13.08(.515)
10	12.00(.472)	15.9(.626)	16.06(.633)
12	15.00(.591)	18.9(.744)	19.08(.751)
14	18.00(.709)	21.9(.862)	22.07(.869)
16	21.00(.827)	24.9(.980)	25.07(.967)
18	24.00(.945)	27.9(1.098)	26.07(1.105)
20	27.00(1.063)	30.9(1.217)	31.06(1.223)
22	30.00(1.181)	33.9(1.335)	34.06(1.341)
24	33.00(1.299)	36.9(1.453)	37.06(1.459)



Panel Cutout Size

THESE DRAWINGS AND SPECIFICATIONS ARE THE PROPERTY OF ON-SHORE TECHNOLOGY, INC. AND SHALL NOT BE REPRODUCED, COPIED OR USED IN ANY MANNER WITHOUT THE PRIOR WRITTEN CONSENT OF ON-SHORE TECHNOLOGY, INC.



TITLE		300HC2V Series - 3.00mm latch/lock cable side housing, with ears, 2 row			
PART NO.	300HC2VXXC (XX - CIRCUITS)	DWG NO.	300HC2VXXC.DWG		
APPROVED	CHECKED	DESIGNED	DRAWN	4050	
Sue 2007.02.14	Maresh 2007.02.14	Davis 2007.02.14	David 2007.02.13	Tolerance	
					UNIT: mm/inches
					SCALE: NONE
				SHEET: 01/01	REV.: A

X.	±0.30/.012
XX	±0.20/.008
XXX	±0.10/.004