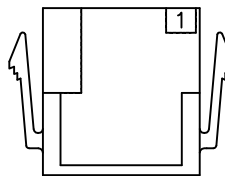
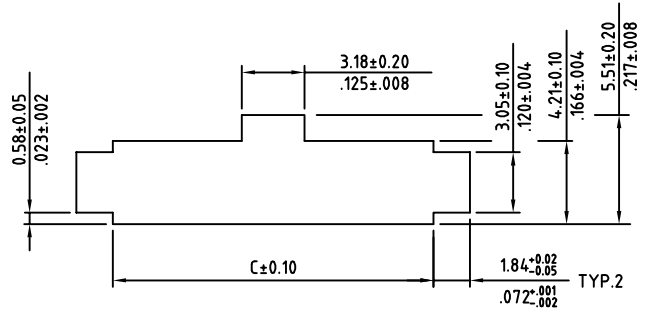
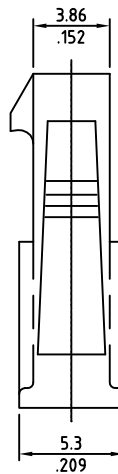
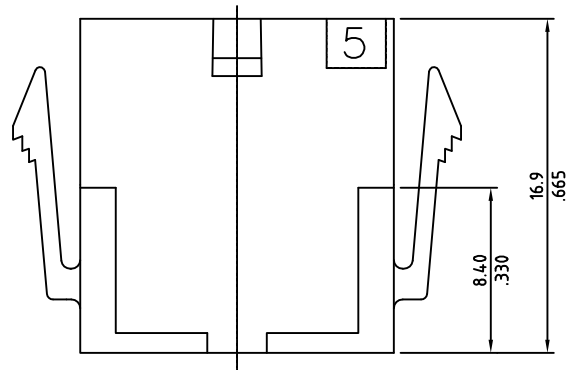
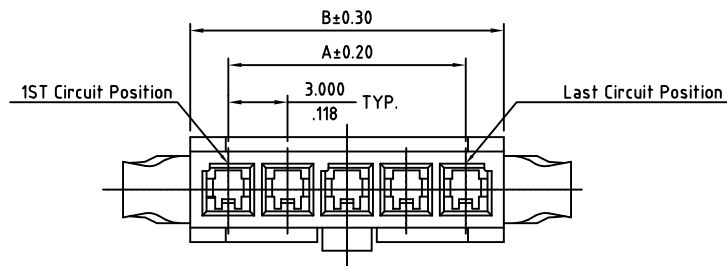


SIGN	DATE	DESCRIPTION	APPROVER
		<i>THIS IS CAD DRAWING, DO NOT REVISE MANUALLY!!!</i>	



Back View

Panel Cutout Size

SPECIFICATIONS

Body: PBT
 Color: Black
 Flammability: UL94V-0
 Current: 5A for AWG#20-22
 4A for AWG#24
 2A for AWG#26
 1A for AWG#28-30
 Voltage: 250V AC(r.m.s.)
 Dielectric Withstanding: 1500 VAC for one minute
 Insulation Resistance: >1000 MΩ
 Contact Resistance: <10 mΩ
 Operating Temperature: -40°C ± 105°C

RoHS Compliant

Circuits	Dimension		
	A	B	C
02	3.00(.118)	6.86(.270)	7.21(.284)
03	6.00(.236)	9.86(.388)	10.21(.402)
04	9.00(.354)	12.86(.506)	13.21(.520)
05	12.00(.472)	15.86(.624)	16.21(.638)
06	15.00(.591)	18.86(.742)	19.21(.756)
07	18.00(.709)	21.86(.860)	22.20(.874)
08	21.00(.827)	24.86(.978)	25.20(.992)
09	24.00(.945)	27.86(1.096)	28.20(1.110)
10	27.00(1.063)	30.86(1.214)	31.22(1.229)
11	30.00(1.181)	33.86(1.332)	34.22(1.347)
12	33.00(1.299)	36.86(1.450)	37.22(1.465)



THESE DRAWINGS AND SPECIFICATIONS ARE THE PROPERTY OF ON-SHORE TECHNOLOGY, INC. AND SHALL NOT BE REPRODUCED, COPIED OR USED IN ANY MANNER WITHOUT THE PRIOR WRITTEN CONSENT OF ON-SHORE TECHNOLOGY, INC.

TITLE		300HC1V Series - 3.00mm latch'n lock cable side housing, with ears, single row			
PART NO.	300HC1VXXC (xx - circuits)	DWG NO.	300HC1VXXC.DWG		
APPROVED	CHECKED	DESIGNED	DRAWN	4050	
Sue 2007.02.14	Maresh 2007.02.14	Davis 2007.02.14	David 2007.02.13	Tolerance	
					X. ±0.30/.012
					UNIT: mm/inches
				SCALE: NONE	XXX ±0.10/.004
				SHEET: 01/01	REV.: A