

SIGN	DATE	DESCRIPTION	APPROVER
			Tony

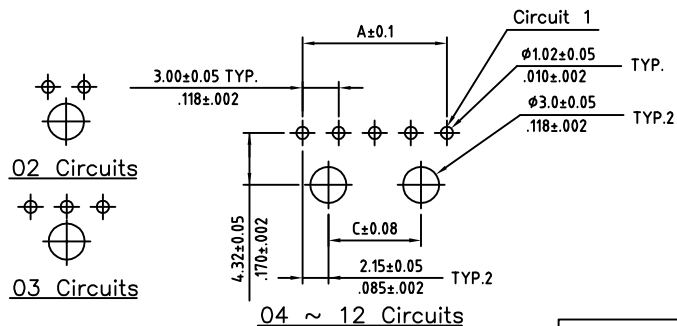
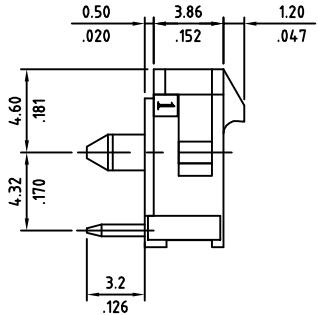
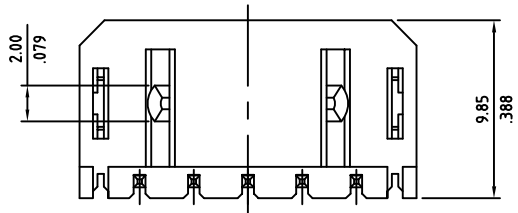
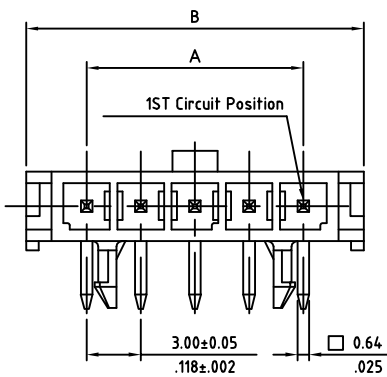
THIS IS CAD DRAWING, DO NOT REVISE MANUALLY!!!

CIRCUITS	DIM.A	DIM.B	DIM.C
02	3.00(.118)	9.65(.380)	NA
03	6.00(.236)	12.65(.498)	NA
04	9.00(.354)	15.65(.616)	4.7(.185)
05	12.00(.472)	18.65(.734)	7.7(.303)
06	15.00(.591)	21.65(.852)	10.7(.421)
07	18.00(.709)	24.65(.970)	13.7(.539)
08	21.00(.827)	27.65(1.089)	16.7(.657)
09	24.00(.945)	30.65(1.207)	19.7(.776)
10	27.00(1.063)	33.65(1.325)	22.7(.894)
11	30.00(1.181)	36.65(1.443)	25.7(1.012)
12	33.00(1.299)	39.65(1.561)	28.7(1.130)

SPECIFICATIONS

Body: Nylon 6T
 Color: Black
 Contact: Brass
 Plating: Sn over Ni (Standard)
 other plating available, may require MOQ
 Flammability: UL94V-0
 Current: 5A for AWG#20-22
 4A for AWG#24
 3A for AWG#26
 2A for AWG#28
 1A for AWG#30
 Voltage: 250V AC(r.m.s.)
 Dielectric Withstanding: 1500 VAC for one minute
 Insulation Resistance: >1000 MΩ
 Contact Resistance: <10 mΩ
 Operating Temperature: -40°C ± 105°C

RoHS Compliant



Recommended P.C. Board layout

THESE DRAWINGS AND SPECIFICATIONS ARE THE PROPERTY OF ON-SHORE TECHNOLOGY, INC. AND SHALL NOT BE REPRODUCED, COPIED OR USED IN ANY MANNER WITHOUT THE PRIOR WRITTEN CONSENT OF ON-SHORE TECHNOLOGY, INC.



TITLE				300HBT1R series, 3.00mm latch'n lock, side entry, dip solder header, single row, with pegs			
PART NO.		300HBT1RXX (xx - circuits)		DWG NO.		300HBT1RXX.DWG	
APPROVED		CHECKED	DESIGNED	DRAWN	4050		Tolerance
Sam	Tony	Ralph	Lin				X. ±0.30/.012
2005.12.14	2005.12.14	2005.12.14	2005.12.14				X.X ±0.20/.008
				UNIT: mm/inches		X.XX ±0.10/.004	
				SCALE: NONE		X° ±1°	
				SHEET: 01/01		REV: A	