

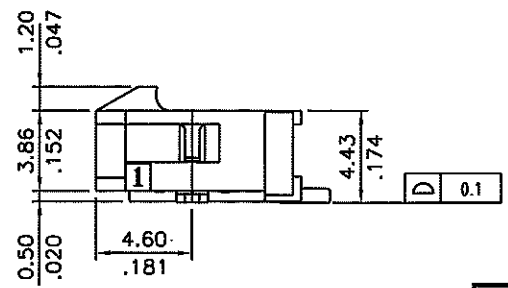
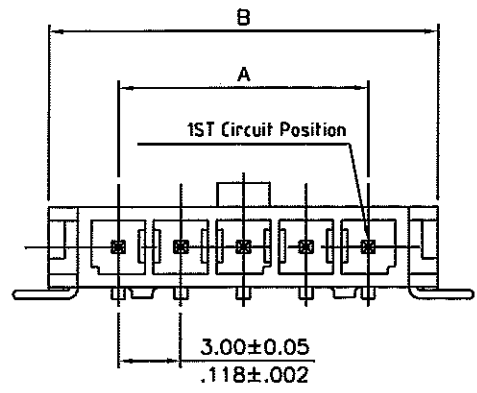
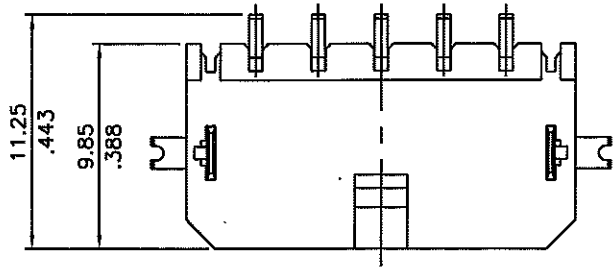
SIGN	DATE	DESCRIPTION	APPROVER
			Tony
THIS IS CAD DRAWING, DO NOT REVISE MANUALLY!!!			

SPECIFICATIONS

Body: Nylon 6T
 Color: Black
 Flammability: UL94V-0
 Current: 5A for AWG#20-22
 4A for AWG#24
 2A for AWG#26
 1A for AWG#28-30
 Voltage: 250V AC(r.m.s.)
 Dielectric Withstanding: 1500 VAC for one minute
 Insulation Resistance: >1000 MΩ
 Contact Resistance: <10 mΩ
 Operating Temperature: -40°C ± 105°C
 Soldering Time: 20 seconds maximum
 Soldering Pot: 250°C-260°C

RoHS Compliant

CIRCUITS	DIM.A	DIM.B	DIM.C
02	3.00(.118)	9.65(.380)	14.2(.559)
03	6.00(.236)	12.65(.498)	17.2(.677)
04	9.00(.354)	15.65(.616)	20.2(.795)
05	12.00(.472)	18.65(.734)	23.2(.913)
06	15.00(.591)	21.65(.852)	26.2(1.031)
07	18.00(.709)	24.65(.970)	29.2(1.150)
08	21.00(.827)	27.65(1.089)	32.2(1.268)
09	24.00(.945)	30.65(1.207)	35.2(1.386)
10	27.00(1.063)	33.65(1.325)	38.2(1.504)
11	30.00(1.181)	36.65(1.443)	41.2(1.622)
12	33.00(1.299)	39.65(1.561)	44.2(1.740)



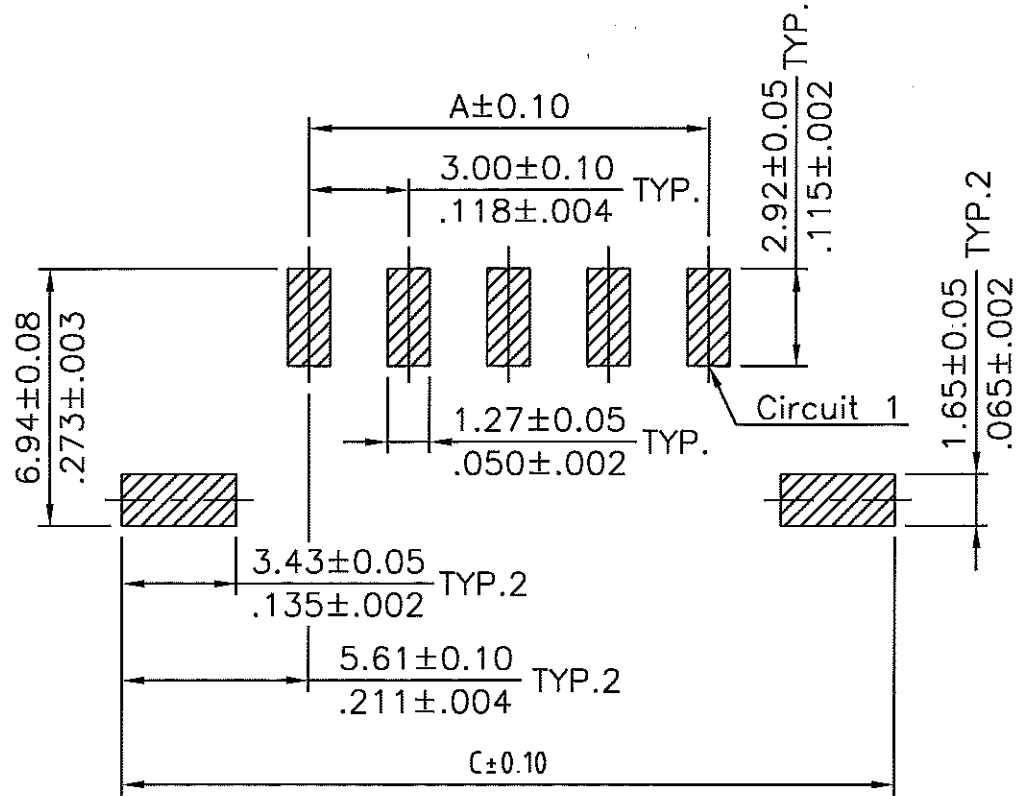
THESE DRAWINGS AND SPECIFICATIONS ARE THE PROPERTY OF ON-SHORE TECHNOLOGY, INC. AND SHALL NOT BE REPRODUCED, COPIED OR USED IN ANY MANNER WITHOUT THE PRIOR WRITTEN CONSENT OF ON-SHORE TECHNOLOGY, INC.

OST ON-SHORE TECHNOLOGY, INC.

TITLE	300HBS1R Series - 3.00mm latch'n lock, side entry, single row, fixed tabs, SMT		
PART NO.	300HBS1RXXF (xx - circuits)	DWG NO.	300HBS1RXXF.DWG
APPROVED	CHECKED	DESIGNED	DRAWN
		Tony 2006.02.07	Tony 2006.02.07
			4050
			Tolerance
			X ±0.30/.012
			X.X ±0.20/.008
			X.XX ±0.10/.004
			X* ±1*
		UNIT: mm./inches	SCALE: NONE
		REV.: A	SHEET: 01/03

SIGN	DATE	DESCRIPTION	APPROVER
			Tony

THIS IS CAD DRAWING, DO NOT REVISE MANUALLY!!!



Recommended P.C. Board Layout



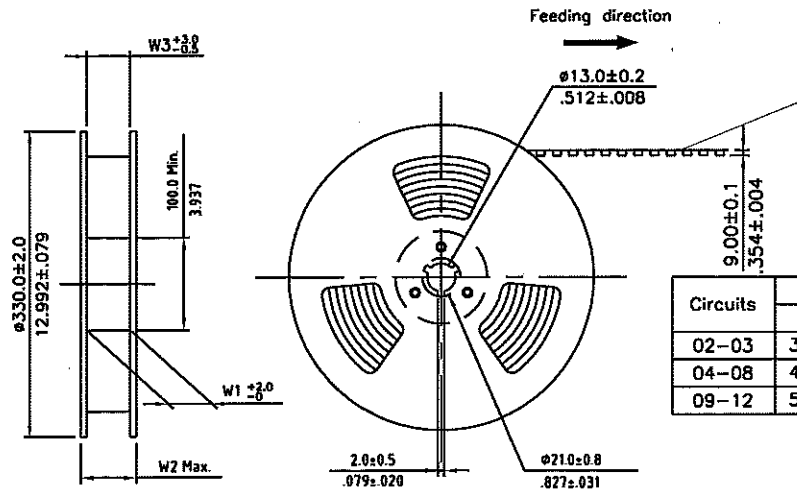
ON-SHORE TECHNOLOGY, INC.

THESE DRAWINGS AND SPECIFICATIONS ARE THE PROPERTY OF ON-SHORE TECHNOLOGY, INC. AND SHALL NOT BE REPRODUCED, COPIED OR USED IN ANY MANNER WITHOUT THE PRIOR WRITTEN CONSENT OF ON-SHORE TECHNOLOGY, INC.

TITLE		300HBS1R Series - 3.00mm latch'n lock, side entry, single row, fixed tabs, SMT		
PART NO.		300HBS1RXXF (xx - circuits)	DWG NO.	300HBS1RXXF.DWG
APPROVED	CHECKED	DESIGNED	DRAWN	4050
		Tony 2006.02.07	Tony 2006.02.07	Tolerance
		SHEET: 02/03	REV: A	UNIT: mm./inches X ±0.30/.012 XX ±0.20/.008 XXX ±0.10/.004 X* ±1°

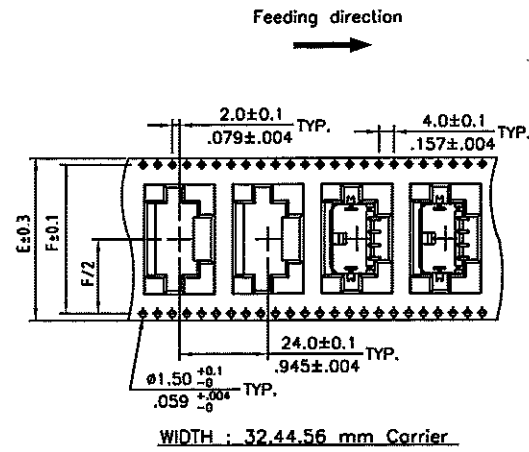
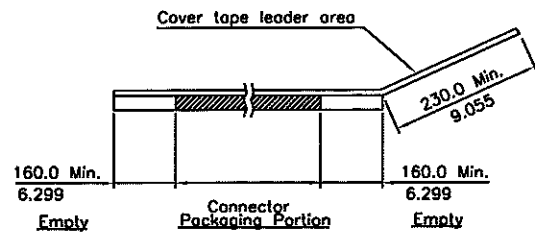
SIGN	DATE	DESCRIPTION	APPROVER
			Tony

THIS IS CAD DRAWING, DO NOT REVISE MANUALLY!!!



- NOTE :
- * Reel Material : HIPS
 - * Carrier Material : Transparent,Conductive Polystyrene Alloy
 - * Cover Tape Material : Polyester
 - * Cover Tape Peel Strength : 0.1N - 1.3N
 - * Carrier camber is within 1mm in 250mm
 - * All dimensions meet EIA-481-B requirements.
 - * Quantity : 320 PCS/Reel

Circuits	Dimension					Packing (Reel/Coil)
	E	F	W1	W2	W3	
02-03	32.0(1.260)	28.40(1.118)	32.5(1.280)	38.5(1.516)	32.5(1.280)	7
04-08	44.0(1.732)	40.40(1.596)	44.5(1.752)	50.5(1.988)	44.5(1.752)	5
09-12	56.0(2.205)	52.40(2.063)	56.5(2.224)	62.5(2.461)	56.5(2.224)	4



THESE DRAWINGS AND SPECIFICATIONS ARE THE PROPERTY OF ON-SHORE TECHNOLOGY, INC. AND SHALL NOT BE REPRODUCED, COPIED OR USED IN ANY MANNER WITHOUT THE PRIOR WRITTEN CONSENT OF ON-SHORE TECHNOLOGY, INC.

ON-SHORE TECHNOLOGY, INC.

TITLE		300HBS1R Series - 3.00mm latch'n lock, side entry, single row, fixed tabs, SMT				
PART NO.		300HBS1RXXF (xx - circuits)		DWG NO.		300HBS1RXXF.DWG
APPROVED	CHECKED	DESIGNED	DRAWN	4050		
		Tony 2006.02.07	Tony 2006.02.07			
				SHEET: 03/03		REV.: A
						Tolerance X ±0.30/.012 X.X ±0.20/.008 X.XX ±0.10/.004 X* ±1*