

SIGN	DATE	DESCRIPTION	APPROVER

THIS IS CAD DRAWING, DO NOT REVISE MANUALLY!!!

Circuits	Dimension		
	A	B	C
2	1.25(.049)	4.35(.171)	3.15(.124)
3	2.50(.098)	5.6(.220)	4.40(.173)
4	3.75(.148)	6.85(.270)	5.65(.222)
5	5.00(.197)	8.1(.319)	6.90(.272)
6	6.25(.246)	9.35(.368)	8.15(.321)
7	7.50(.295)	10.6(.417)	9.40(.370)
8	8.75(.344)	11.85(.467)	10.65(.419)
9	10.00(.394)	13.1(.516)	11.90(.469)
10	11.25(.443)	14.35(.565)	13.15(.518)
11	12.50(.492)	15.6(.614)	14.40(.567)
12	13.75(.541)	16.85(.663)	15.65(.616)
13	15.00(.591)	18.1(.713)	16.90(.665)
14	16.25(.640)	19.35(.762)	18.15(.715)
15	17.50(.689)	20.6(.811)	19.40(.764)

SPECIFICATIONS

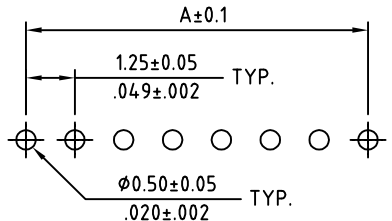
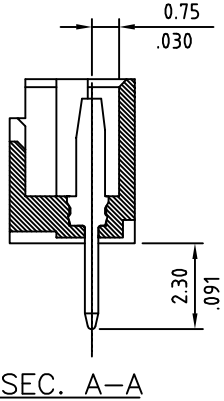
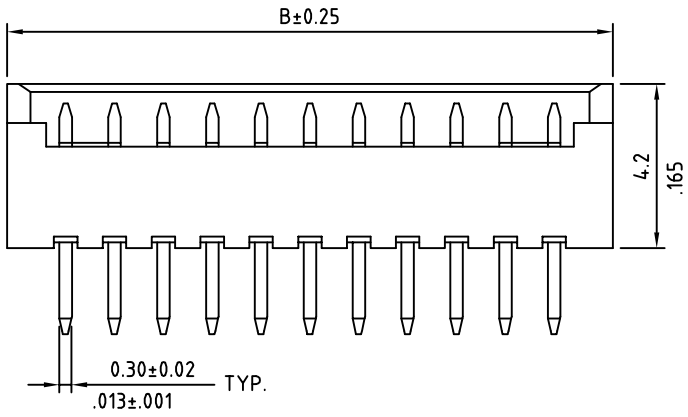
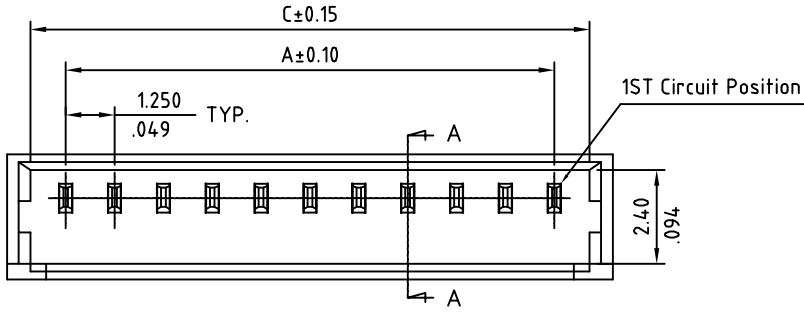
Current: 1A
Voltage: 125V
Temperature Range: -40°C ~ +85°C
Contact Resistance: <20mΩ
Insulation Resistance: >100MΩ
Withstanding Voltage: 250V AC/minute
Material: Nylon 46+40% G.F.
Flammability: UL 94V-0
Contact : Phosphor Bronze
Contact plating: 100u" Tin over 30u" Nickel

RoHS Compliant

PART NUMBER:

1251VHT5XXTU

Number of circuits:
02: 2 circuits
03: 3 circuits
.....
15: 15 circuits



Recommended P.C. Board Layout

THESE DRAWINGS AND SPECIFICATIONS ARE THE PROPERTY OF ON-SHORE TECHNOLOGY, INC. AND SHALL NOT BE REPRODUCED, COPIED OR USED IN ANY MANNER WITHOUT THE PRIOR WRITTEN CONSENT OF ON-SHORE TECHNOLOGY, INC.



TITLE		1251VHT5 Series - 1.25mm vertical, Thru-hole header			
PART NO.	1251VHT5XXTU	DWG NO.	1251VHT5XXTU.DWG		
APPROVED	CHECKED	DESIGNED	DRAWN	4050	
	Marvin 2003.05.06	Marvin 2003.05.06	Marvin 2003.05.06	Tolerance	
				UNIT: mm/inches	XX ±0.25/.010
				SCALE: NONE	X.XX ±0.15/.006
				REV.: A	X.XXX ±0.08/.003
				SHEET: 01/01	* ±1°